

WELCOME TO RADSTEIN

The Baumwipfelpfad (treetop path) Steigerwald near Markt Ebrach in the district of Bamberg in Upper Franconia has existed since March 2016.

The trees along the path are within the visitor's reach. High up, mostly in the treetops, the path leads on boardwalks at different heights through the forest. 1,150 meters long and mainly built out of wood, the path winds through the forests of the Ebrach Forest, which are rich in deciduous hardwood.

The highlight and distinct highest point at 42 meters is the cup-shaped tower which opens outwards. The view into the distance impresses with a vastness beyond the Steigerwald that never seems to end.

What is more, with a maximum incline of 6% wheelchairs, strollers and walking frames can also be used on this sturdy construction.



IMPRINT

Baumwipfelpfad Steigerwald
Bayerische Staatsforsten AÖR
Radstein 2, 96157 Ebrach
Tel.: +49 (0) 9553 989-80102
E-mail: info-baumwipfelpfad@baysf.de
www.baumwipfelpfadsteigerwald.de

DIRECTIONS



This institution is funded by the State of Bavaria.

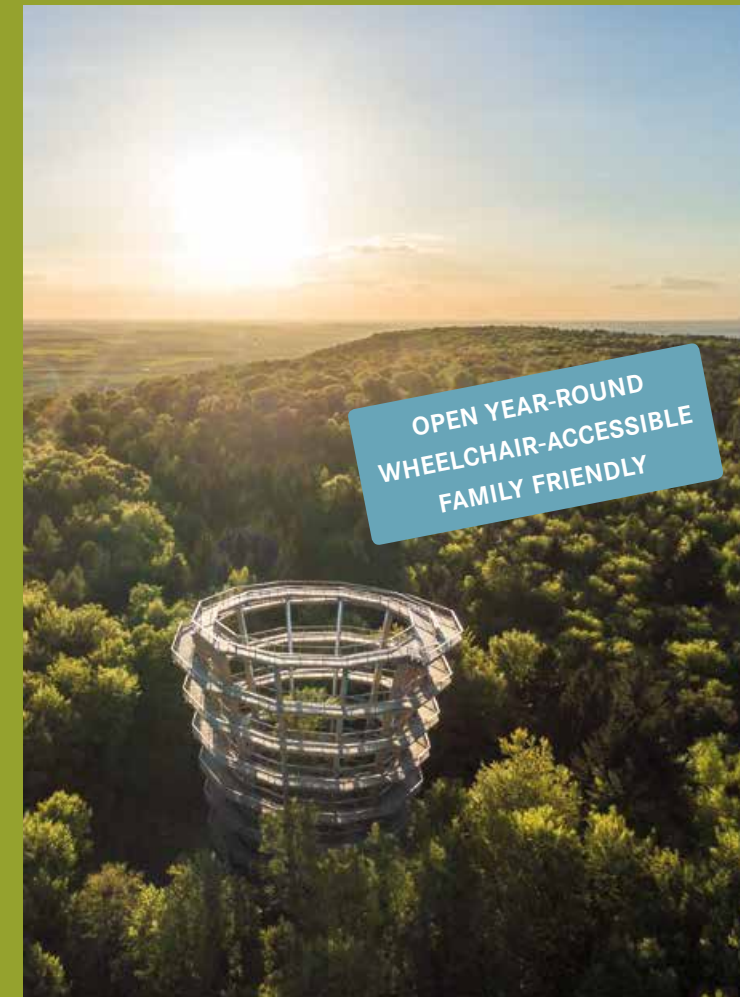
The Bayerische Staatsforsten are PEFC-certified.
This flyer has been printed on PEFC-certified paper.
(PEFC/04-31-2017)

Content and structure of this publication are protected by copyright.
The reproduction of information or data, especially the use of texts, partial text or graphic material, is subject to prior consent by the Bayerische Staatsforsten.



BAUMWIPFELPFAD
STEIGERWALD

ABOVE THE TREETOPS OF THE STEIGERWALD



OPEN YEAR-ROUND
WHEELCHAIR-ACCESSIBLE
FAMILY FRIENDLY

FOR EXPLORERS BIG AND SMALL

We're flying high! Even the way up to the highest platform at 42 meters in height is a real highlight: the path winds up on the outside of the tower until it reaches the top. Once there, you'll be rewarded with a unique view.

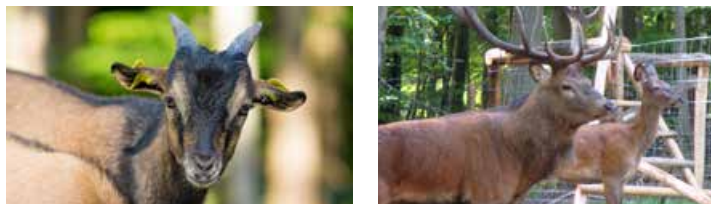
There's also a lot to discover on the path itself with additional diverging paths and adventure stations for adults and children alike.



DIGITAL DISCOVERY WITH THE TREETOP APP

With our treetop app and free WiFi, you have the perfect companion for your visit giving you additional impressions along the way.

EXPERIENCE NATURE & ANIMALS UP CLOSE



Experience a unique birds eye view into the new deer- and roe deer park. On the path, you will find a huge bird feeder and undisturbed insights in some bird's nests. At the exit you have the possibility to visit our petting zoo with dwarf sheep, dwarf goats and rabbits as well as the adjoining playground and rest area.

JOINT ACTION FOR THE REGION

The Baumwipfelpfad complements the nearby "Steigerwald-Zentrum – Nachhaltigkeit erleben" (Steigerwald Center – Experience Sustainability). You can use the connecting path that leads through forests rich in deciduous hard-wood to hike comfortably to the Steigerwald-Zentrum in Handthal. A shuttle bus runs between the two on weekends and bank holidays.

FOR THOSE INTERESTED IN A GUIDED TOUR

On a guided tour you will get information on the construction, the Steigerwald and the integrative forest management of the Bavarian Forestry.

Please book the tour at least four weeks in advance:
info-baumwipfelpfad@baysf.de

No guided tours on sundays and bank holidays.

OPENING HOURS AND FURTHER INFORMATION

OPENING HOURS

April 1 to October 31 9 a.m. to 6 p.m.
November 1 to March 31 10 a.m. to 4 p.m.

Entry up to 1 hour before end of opening hours.

ENTRANCE FEES

Single tickets:

Adults	€ 10.00
Groups of adults of 15 persons and over	€ 9.00
Children aged 6 to 16	€ 6.50
Groups of children/School classes of 15 persons and over (Children under 12 years old must be accompanied by an adult)	€ 5.50
With ID: disabled persons, pupils over 15, students, trainees, senior citizens	€ 9.00
Family ticket (Parents/Grandparents with their own children/grandchildren aged 6 to 16)	€ 22.00
Single with children (1 adult with their own children/grandchildren aged 6 to 16)	€ 13.00
Guided tours from groups of 15 persons and over plus	€ 3.00

Annual season-tickets:

Adults	€ 60.00
Children aged 6 to 16	€ 35.00
With ID: disabled persons, pupils over 15, students, trainees, senior citizens	€ 50.00
Family ticket (Parents/Grandparents with their own children/grandchildren aged 6 to 16)	€ 120.00
Single with children (1 adult with their own children/grandchildren aged 6 to 16)	€ 85.00

GENERAL INFORMATION

- Closing possible at any time due to weather conditions.
- The Baumwipfelpfad is wheelchair-accessible.
- Sorry, no animals of any kind are allowed on the path.
Dog crates and drinking water are available at the entrance.
- General user regulations of the path apply.
- Parking for free.

With appearance of this price list all previous have lost their validity